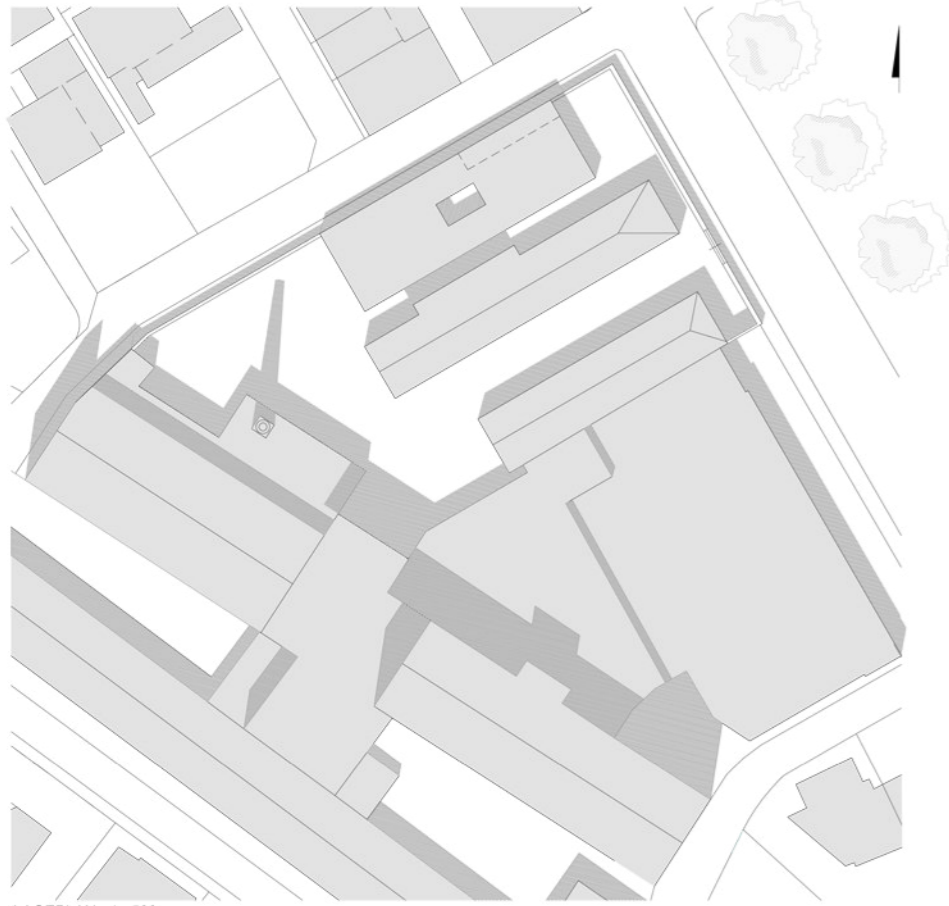




horgenglarus

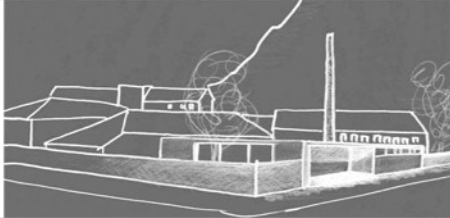
STOP



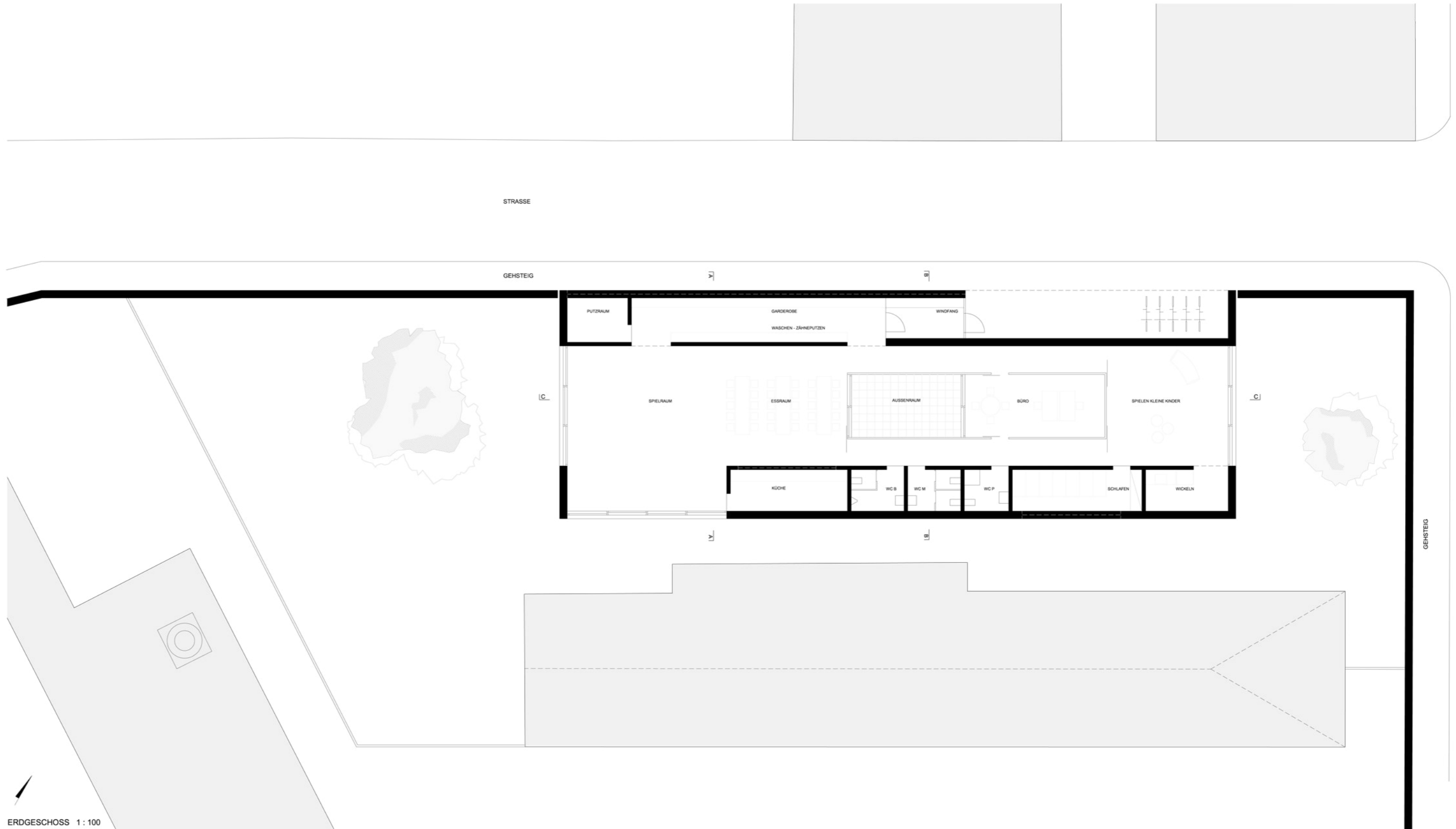
LAGEPLAN 1 : 500



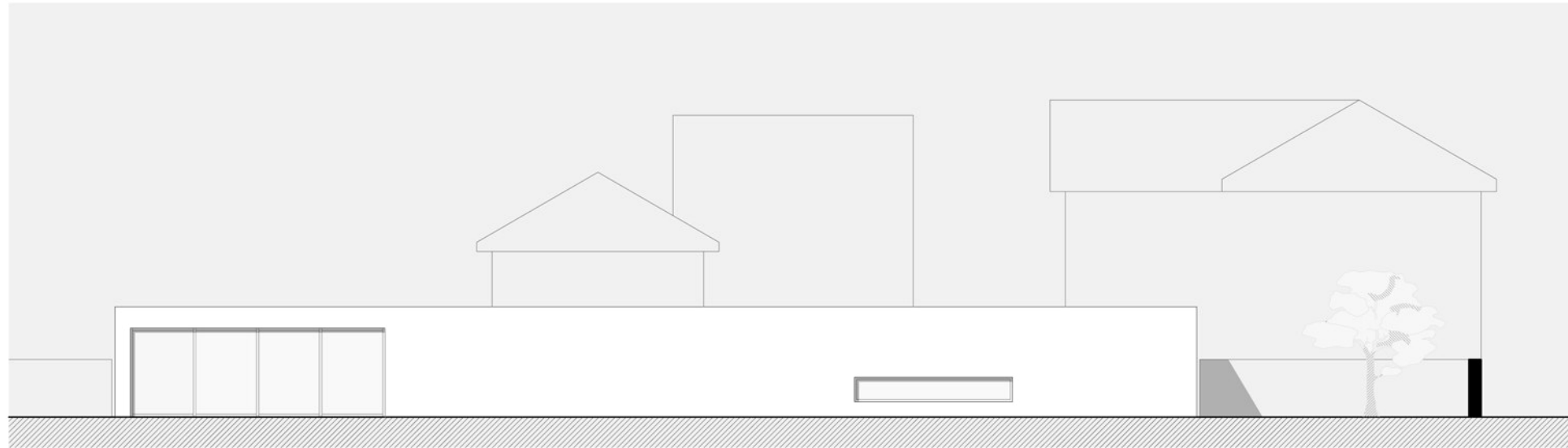
BESTAND FOTOS



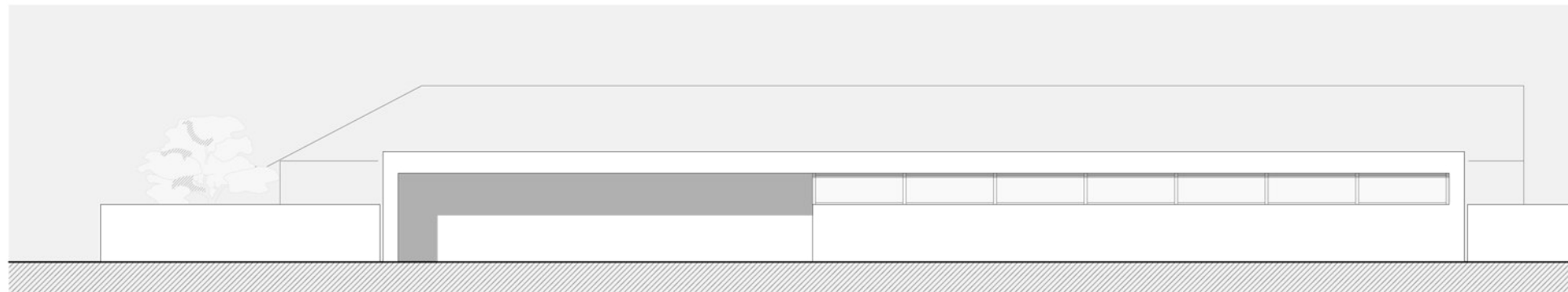
ENTWURFS - SKIZZE



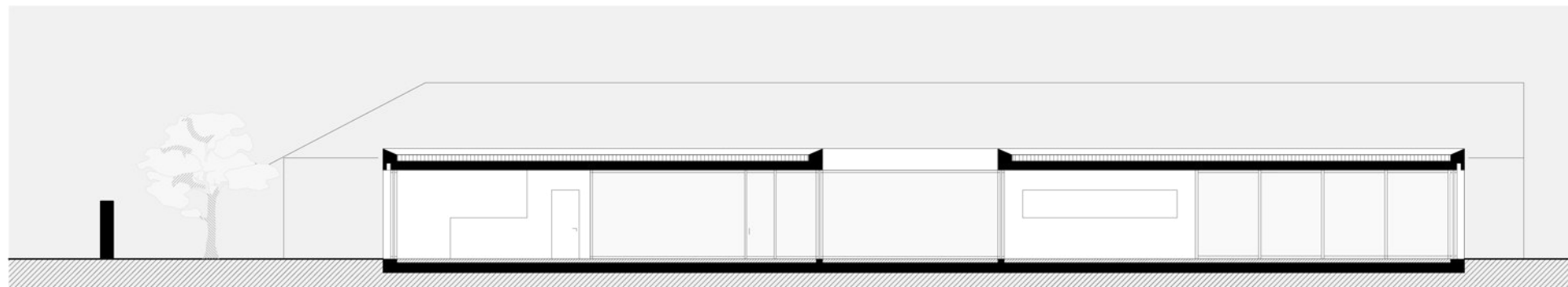
ERDGESCHOSS 1 : 100



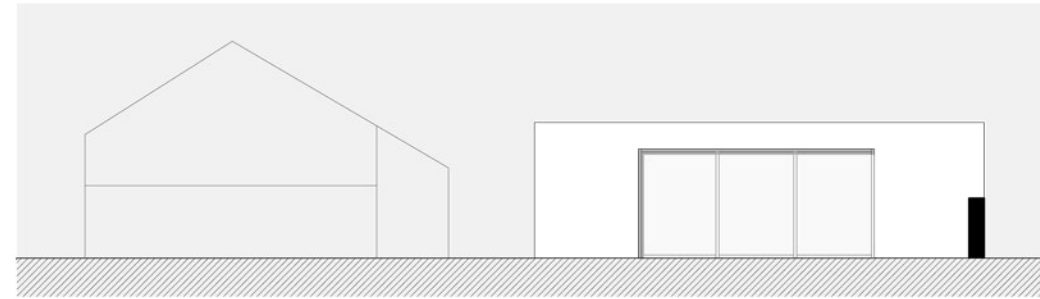
SÜDANSICHT 1 : 100



NORDANSICHT 1 : 100



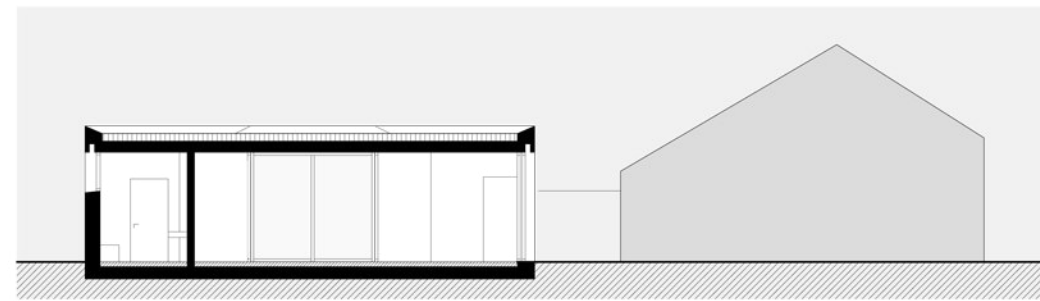
SCHNITT C-C 1 : 100



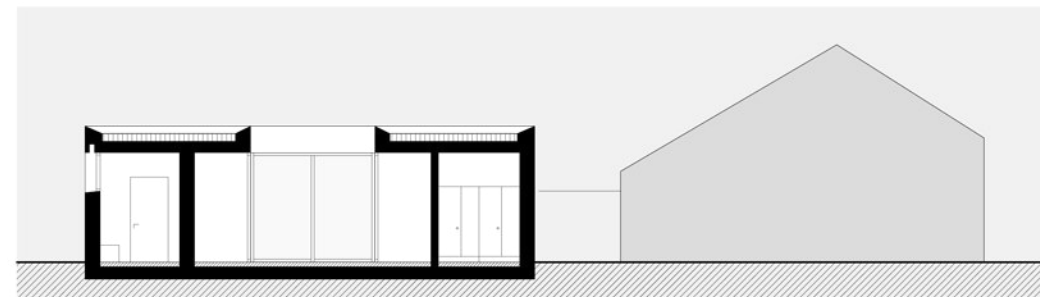
OSTANSICHT 1 : 100



WESTANSICHT 1 : 100



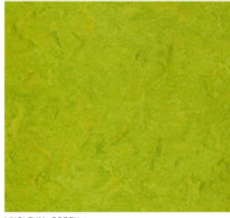
SCHNITT A-A 1 : 100



SCHNITT B-B 1 : 100



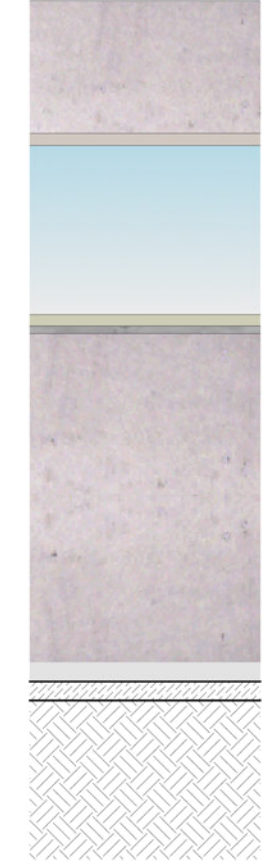
FARBIGE GLAS ELEMENTE - BÜRO UND INNENHOF
 REFERENZ: SCHULGEBÄUDE NIEDERLANDE
 WWW.PRODUCTCONCEPT.COM



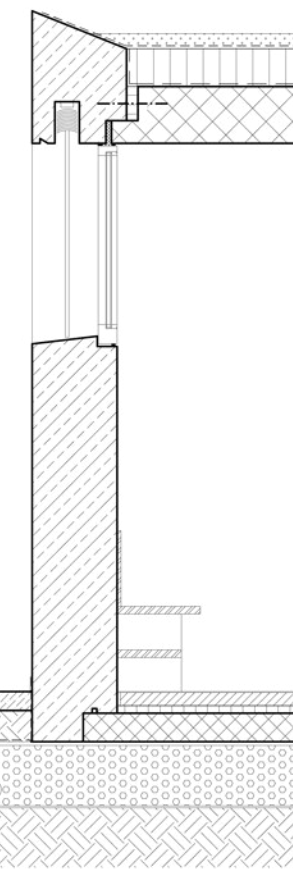
LINOLEUM - BODEN

- DECKE
- EXTENSIVE DACHBEGRIENUNG
- ZWEI LAGIGE BITUMENBAHN
- WÄRMEDÄMMUNG 20CM
- DAMPFSPIEGEL EINKLAGIGE BITUMENBAHN
- DECKE BETON 30CM
- DECKENWÄNDUNG MISAPOR
- STAHLSTIFT
- WASSERWÄHRE
- FENSTERKÄHLEN LÄRCHGEÖLT
- FIX VERLÄGUNG
- SOLISVERLÄGUNG
- WAND
- MISAPOR BETON
- ABDICHTUNGSKANAL SYSTEM DRYTECH
- RANDABSCHLUSS AUSSEN IN ALU
- BODEN
- LINOLEUM 4MM
- FLIESS ESTRICH 7CM
- BODENHEIZUNG
- WÄRMEDÄMMUNG 4CM
- BITUMENBAHN EINKLAGIG 4MM
- UNTERBODEN
- MISAPOR SCHÜTTUNG
- GEOTEXTIL 300 G/M²
- BODENBELAG AUSSEN
- EINGEFÄRBTES ASPHALT

AUSSEN



FASSADENSCHNITT A-A 1 : 20

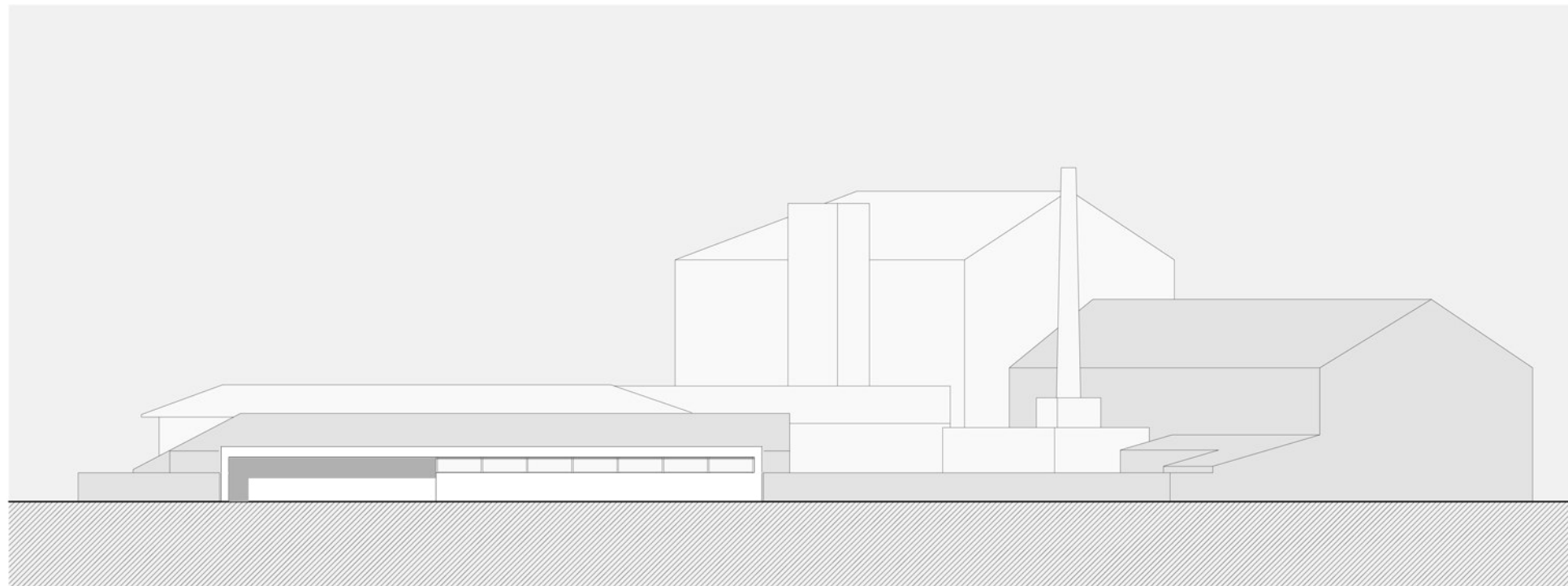


INNEN





OSTFASSADE 1 : 200



NORDANSICHT 1 : 200



VISUALISIERUNG INNENRAUM

